
bpMAX.DLL

Purpose: this application is an ActiveX DLL which provides a simple interface for processing MAX functions.

Installation:

1. Run InstallbpMAX.EXE.
2. bpMAX.DLL requires access to these MAX library files:

MAX DLL'S
MAXEXEC2 DLL
MAXBTRV2 DLL
MAXTRAN2 DLL
MAXORDR2.DLL

These files will be installed by the MAX Client Setup routine in \MAX\MFW2 and will reside in the server in \EXACT\MAX\NET\UPDATES\MFW2. As MAX is updated it is important to also update the files that are used by the bpMAX.DLL.

Usage:

- 1) From MS Access or Visual Basic add a reference to bpMAX.DLL
- 2) Add a class declaration: Global MPro As bpMAXUpdate
- 3) Set a class instance: Set MPro = bpMAXUpdate

Functions:

InitMAX(ShowMessages as boolean) as Boolean

This function is called at the beginning to open the MAX database and to initiate MAXUpdate. ShowMessages determines whether a message box with an error description displays.

dmRecPOIssueWorkbyRef(dmPurchaseOrder As String, _ dmWorkOrder as string, _ dmQty As Double, _ dmStockID As String, _ dmLot As String, _ dmSER As String, _ dmRefer As String, _ dmUDK As String, _ dmUDR As String) As Boolean

This function receives entered quantity from the entered 10 digit Purchase Order and uses the Order Reference and Part ID to find a matching work order and requirement to issue to.

dmRecPOIssueUnplanned(dmOrder As String, _ dmQty As Double, _ dmStockID As String, _ dmLot As String, _ dmSER As String, _ dmRefer As String, _ dmUDK As String, _ dmUDR As String) As Boolean

This function receives entered quantity from the entered 10 digit Purchase Order and also performs an unplanned issue for the same quantity.

bpMAX.DLL

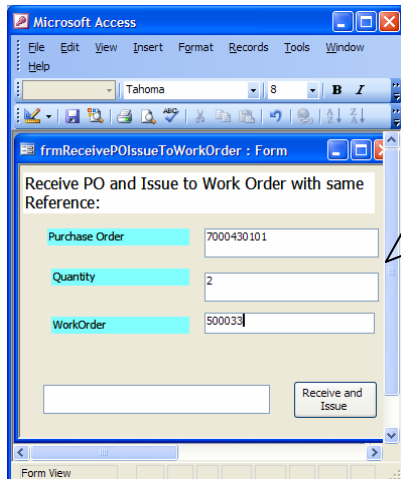
StopMAX () as Boolean

This function closes the connections to MAX.

**Function kbAddPO(kbPO As String, _
kbLine As String, _
kbDel As String, _
kbPartID As String, _
kbVendorID As String, _
kbQty As Double, _
kbDueDate As Date, _
kbStkID As String, _
kbRevLev, _
kbRefer As String, _
kbMPN As String, _
kbUDK as String, _
kbUDR as string, _
kbMPNMfg As String) As Boolean**

This function adds a Purchase Order to MAX.

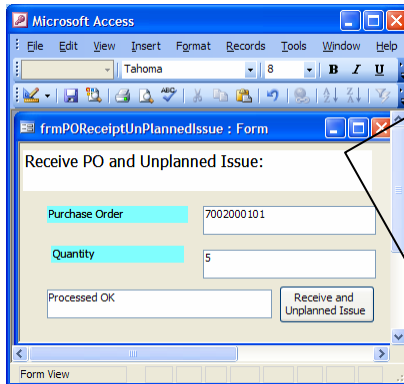
Sample: TestbpMAX.MDB



Sample Syntax: dmRecPOIssueWorkByRef

```
Dim PO As String
Dim WO as string
Dim Qty As Double
Me.Text0.SetFocus
PO = Me.Text0.Text
Me.Text3.SetFocus
Qty = Val(Me.Text3.Text)
Text16.setfocus
WO = TRIM(TEXT16.TEXT )
Set MPro = New bpMAXUpdate
MPro.InitMAX True
If MPro.dmRecPOIssueWorkbyRef(PO, WO,Qty, "", "", "", "", "UDK", "UDR")
Then
    Me.txtMsg.SetFocus
    Me.txtMsg.Text = "Processed OK"
    Me.Text3.SetFocus
    Me.Text3.Text = ""
    Me.Text0.SetFocus
    Me.Text0.Text = ""
Else
    Beep
    Me.txtMsg.SetFocus
    .....
```

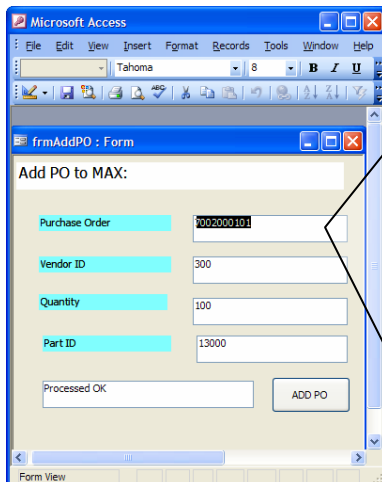
bpMAX.DLL



Sample Syntax: dmRecPOIssueUnplanned

```
Dim PO As String
Dim Qty As Double
Me.Text0.SetFocus
PO = Me.Text0.Text
Me.Text3.SetFocus
Qty = Val(Me.Text3.Text)
Set MPro = New bpMAXUpdate
MPro.InitMAX True

If MPro.dmRecPOIssueUnplanned(PO, Qty, "", "", "", "TEST", "UDK", "UDR")
Then
    Me.txtMsg.SetFocus
    Me.txtMsg.Text = "Processed OK"
    Me.Text3.SetFocus
    Me.Text3.Text = ""
    Me.Text0.SetFocus
    Me.Text0.Text = ""
Else
    Beep
    Me.txtMsg.SetFocus
    Me.txtMsg.Text = "Problem"
End If
MPro.StopMAX
```



Sample Syntax: kbAddPO

```
Dim PO As String
Dim Line As String
Dim Del As String
Dim Qty As Double
Dim PartID As String
Dim VendorID As String
Me.Text0.SetFocus
PO = Left(Me.Text0.Text, 6)
Line = Mid(Me.Text0.Text, 7, 2)
Del = Mid(Me.Text0.Text, 9, 2)
Me.Text16.SetFocus
PartID = Me.Text16.Text
Me.Text20.SetFocus
VendorID = Me.Text20.Text
Me.Text3.SetFocus
Qty = Val(Me.Text3.Text)
Set MPro = New bpMAXUpdate
If MPro.kbAddPO(PO, Line, Del, PartID, VendorID, Qty, Now(), "", "", "Test", "", "") Then
    Me.txtMsg.SetFocus
    Me.txtMsg.Text = "Processed OK"
    Me.Text3.SetFocus
    Me.Text3.Text = ""
    Me.Text0.SetFocus
    Me.Text0.Text = ""
Else
    Beep
    Me.txtMsg.SetFocus
    Me.txtMsg.Text = "Problem"
End If
Set MPro = Nothing
```