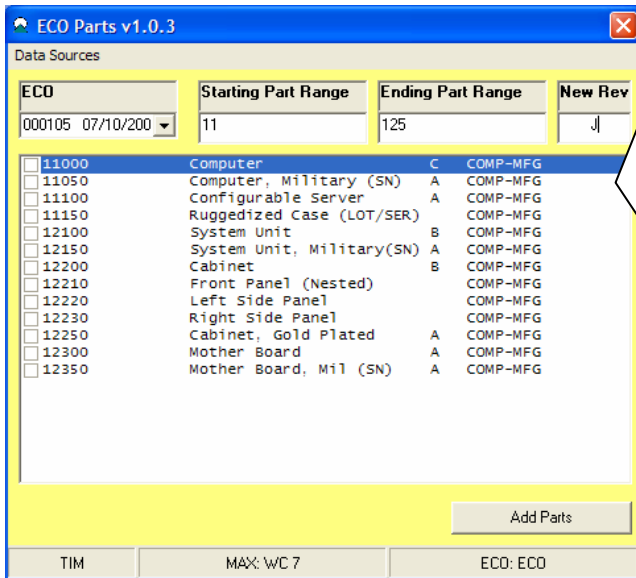




**ECO Parts Importer:** the purpose of this tool is to provide a means to easily import a batch of parts into an existing ECO.



1. Select the ECO from the drop down list.
2. Enter the part range
3. Enter the batch Revision Level or leave default to the next logical revision:

- a. A → B
- b. AA → AB
- c. AAA → AAB

IOUQS – will be skipped.

4. Highlight and delete any parts from the list to remove.
5. Hit Add Parts to import.

Parts that have been imported will display as checked.

**MAX ECO Manager:**

