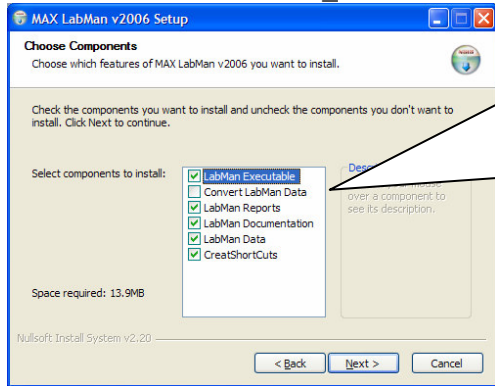


# Installation: LabMan

**Purpose:** This application provides a method for maintaining MAX Labor Tracking entries and creating automatic breaks.

**Install:** Run InstallLabMan\_2006.EXE and follow the prompts.



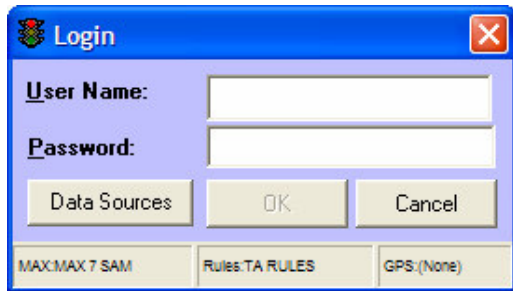
- If converting from an earlier version of LabMan select “Convert LabMan Data”.
- Reports will be saved in \Reports folder.
- Documentation will be saved in \Documentation folder
- LabMan Data (MAXLTTAPR.MDB) will be saved in root application folder.
- If a \Data directory does not exist:
  - a. \Data will be created
  - b. MAXLTTAPR.MDB will be copied to it
  - c. A DSN (“TA Rules”) will be created.

This application requires some MAX files:

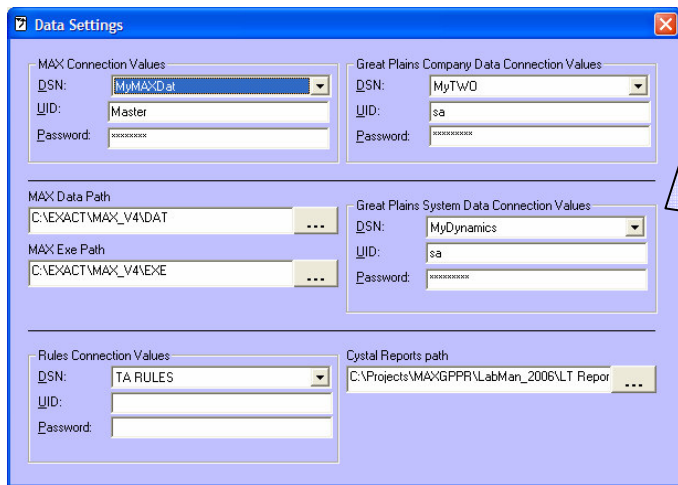
Copy the following MAXUpdate files into the INSTALLED-TO folder or make them available from a search path:

<b>MAX DLL's</b>
MAXBTRV2.DLL
MAXTRAN2.DLL
MAXEXEC2.DLL

These files will be installed by the MAX Client Setup routine in \MAX\MFW2 and will reside on the server in \EXACT\MAX\NET\UPDATES\MFW2. As MAX is updated it is important to also update the files that are used by this application.



The starting User = “MANAGER” and Password = “PASSWORD”



1. MAX will defer to the current client setting which is selected when MAX is started for version 3.7 and later.  
***Please note that MAX also requires a data path and path to the MAX.EXE***
2. Great Plains is optional.
3. The Rules data source will be setup as TA Rules and will point to the MAXLTTAPR.MDB database. For multiple users it may be necessary to locate the database in a shared folder.