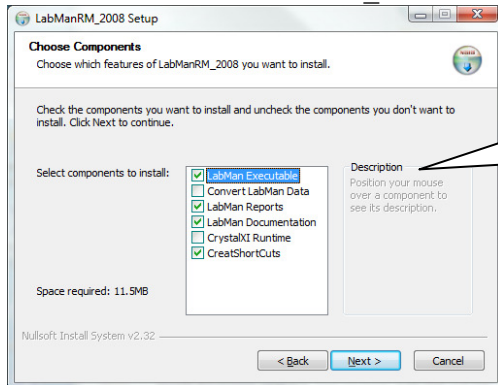


Installation: LabManRM

Purpose: This application provides a method for maintaining ExactRM Labor Tracking entries and creating automatic breaks.

Install: Run InstallLabManRM_2008.EXE and follow the prompts.



- If converting from an earlier version of LabMan select "Convert LabMan Data".
- Reports will be saved in \Reports folder.
- Documentation will be saved in \Documentation folder

This application requires some ExactRM files:

Make the following MAXUpdate files available from a search path:

DLL's
MAXTRAN2.DLL
MAXEXEC2.DLL

These files will be installed by the Client Setup routine in \Exact\RMClient\EFW. As ExactRM is updated it is important to also update the files that are used by this application.

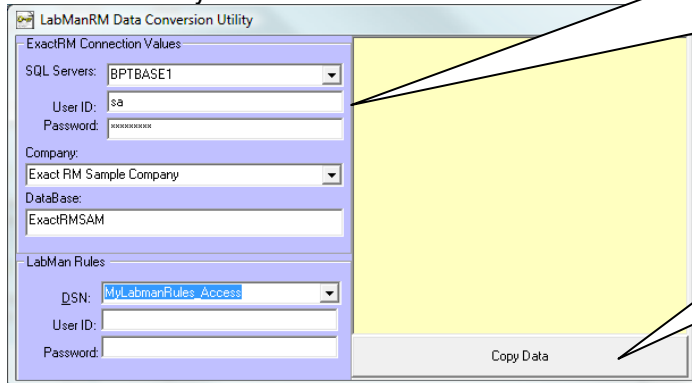
Data Conversion:

If you are converting from the MAX Pervasive version of LabMan this utility will move the LabMan data into the ExactRM company database. The following tables will be created and populated with the current Consignment data which resides in a standalone database, either in MS Access or MS SQL Server:

Consignment tables within ExactRM Company Database:

CUSTOM_BPT_LABMAN_BATCHPAYTRANS
CUSTOM_BPT_LABMAN_ORGANIZATION
CUSTOM_BPT_LABMAN_PAYTRANS
CUSTOM_BPT_LABMAN_RULES
CUSTOM_BPT_LABMAN_SECURITY
CUSTOM_BPT_LABMAN_SHIFTS
CUSTOM_BPT_LABMAN_SWITCHES

Conversion Utility:



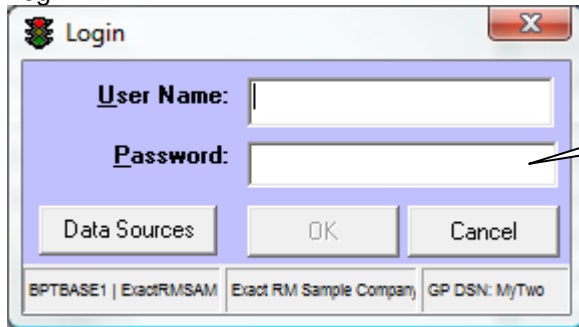
1. Enter the server, user, password and Company for the new ExactRM database
2. Enter the DSN, user and password for current LabMan database

Click "Copy Data" to create the new tables and copy the data.

LabMan:

Installation: LabManRM

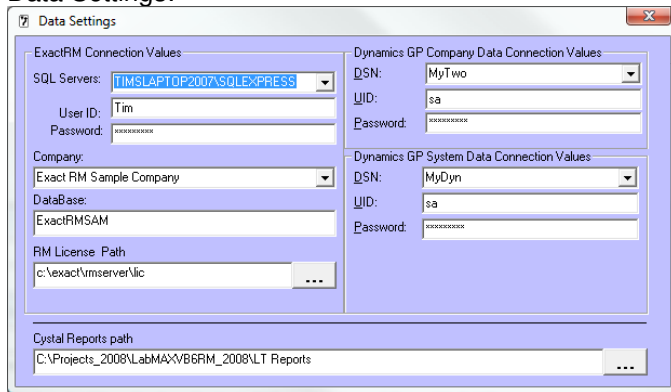
Login:



The Login dialog box has a title bar with a red 'X' button. It contains two text input fields: 'User Name:' and 'Password:'. Below these fields are three buttons: 'Data Sources', 'OK', and 'Cancel'. At the bottom, there is a status bar with the text 'BPTBASE1 | ExactRMSAM | Exact RM Sample Compan | GP DSN: MyTwo'.

The starting User = "MANAGER" and Password = "PASSWORD"

Data Settings:



The Data Settings dialog box is divided into several sections. The 'ExactRM Connection Values' section includes 'SQL Servers:' (a dropdown menu with 'TIMSLAPTOP2007\SQL EXPRESS' selected), 'User ID:' (text input with 'Tim'), and 'Password:' (password input with asterisks). The 'Company:' section includes 'Exact RM Sample Company' (dropdown) and 'DataBase:' (text input with 'ExactRMSAM'). The 'RM License Path' section includes a text input with 'c:\exact\rmserver\lic' and a browse button. The 'Dynamics GP Company Data Connection Values' section includes 'DSN:' (dropdown with 'MyTwo'), 'UID:' (text input with 'sa'), and 'Password:' (password input with asterisks). The 'Dynamics GP System Data Connection Values' section includes 'DSN:' (dropdown with 'MyDyn'), 'UID:' (text input with 'sa'), and 'Password:' (password input with asterisks). The 'Crystal Reports path' section includes a text input with 'C:\Projects_2008\LabMA\VB6RM_2008\LT Reports' and a browse button.

1. Enter the server, user, password and Company for the new ExactRM database.
2. Enter the RM License path.
3. Enter Crystal Reports path (default is \Reports withing installed to folder.)
4. Dynamics Company DSN, user and password(Optional)
5. Dynamics System DSN, user and password (optional; required for Dynamics Payroll integration)
6. MAXLTTAPR.MDB database. For multiple users it may be necessary to locate the database in a shared folder.