

MAX Connectors: Batch Sales Orders

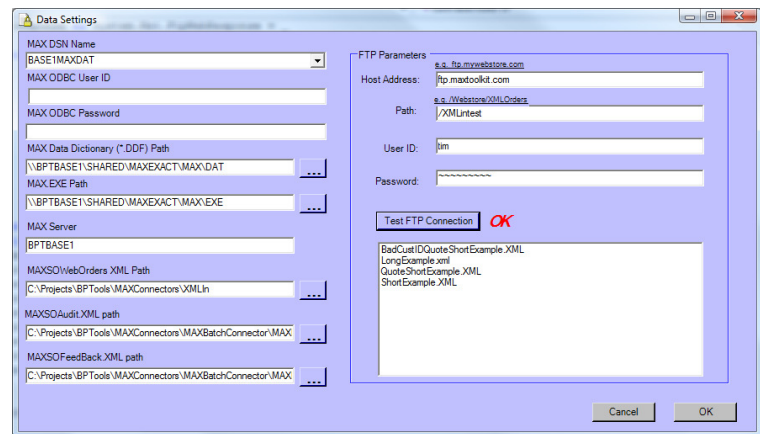
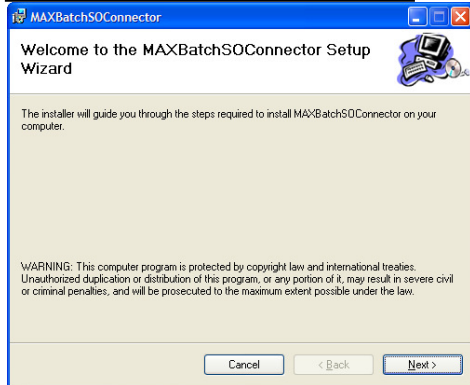
Batch SO Connector: loads XML Sales Orders into MAX and exports open sales orders from MAX.

Requirements: Pervasive Client and Dot.Net Framework 2

Installation: Run InstallMAXBatchSOConnector.MSI (using Windows Installer) and follow the prompts. This application installs with the specific build version of MAXUpdateXML.DLL supplied by Exact. In addition to this MAX DLL the application requires access to the following files:

- MAXINTBO.DLL
- MAXEXEC2.DLL
- MAXORDR2.DLL

These DLLs reside in the CLIENT \MFW2 folder or on the network in \Net\Updates\MFW2 –They should be made available by adding a search path to either location.

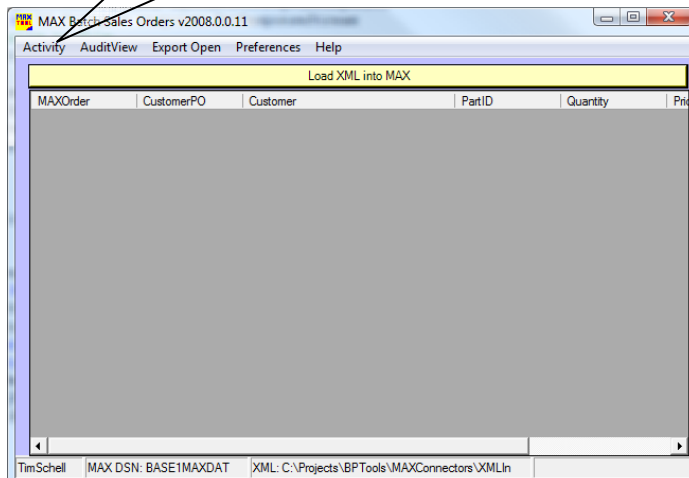


Enter the Data Source, Data Path and EXE Path, and Server Name for MAX

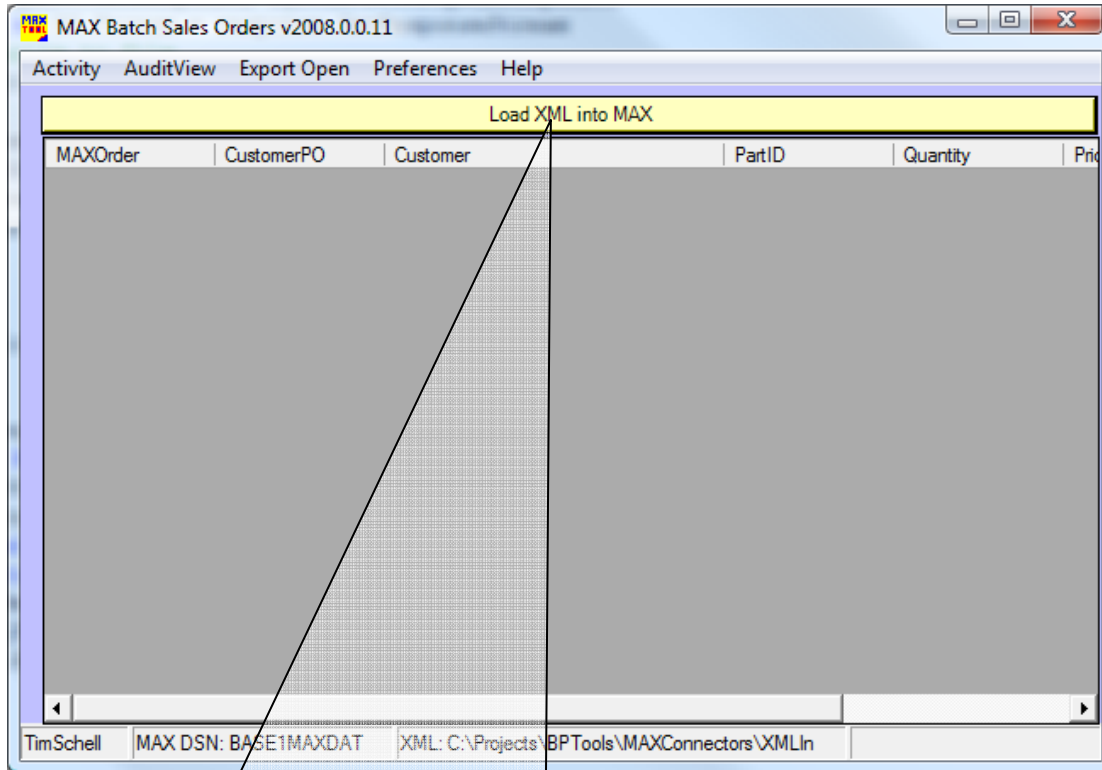
Optional: enter FTP parameters to retrieve files from an ftp site. Specify the address, path if any, user and password.

And the XML import, Audit and Feedback folders.

The files will be copied to the MAXSOWebOrders folder identified on the left side of the form. The FTP files will be renamed with a date stamp as a suffix.

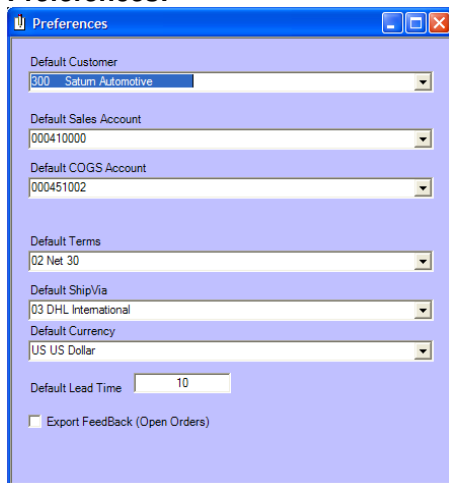


MAX Connectors: Batch Sales Orders



In manual mode click on the “Load XML into MAX” button. The application will run unattended by passing an argument of “GO” in the command line. (...\MAXBATCHSOCONNECTOR.EXE GO)

Preferences:



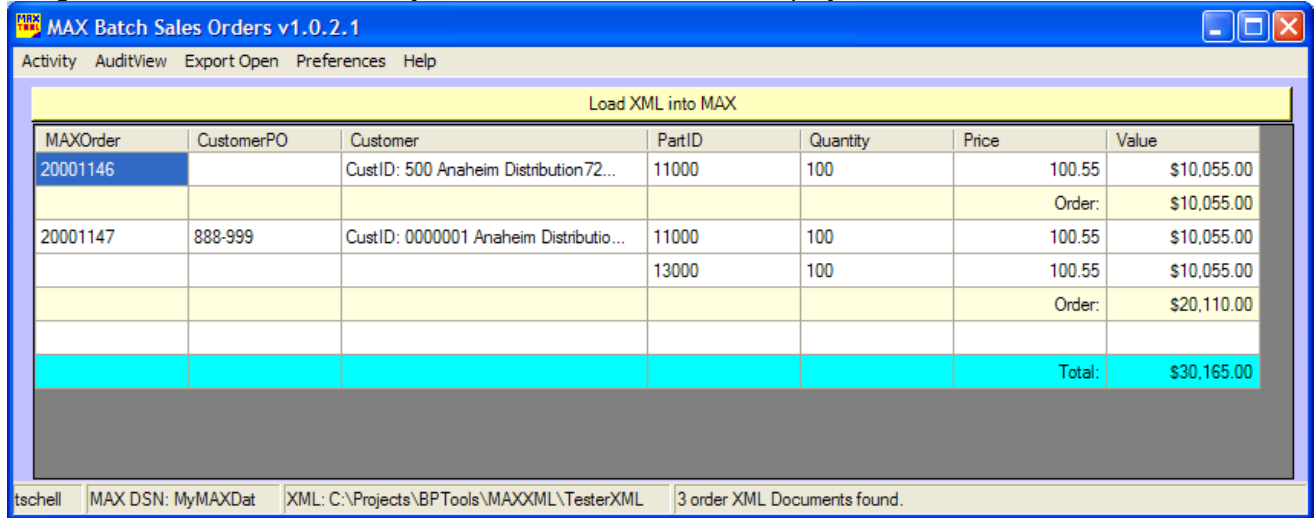
Defaults can be set up for Customer ID, Sales Account, COGS Account, Terms, Ship Via, Currency, and Lead Time.

This allows the Customer ID to be blank and if not using Accounts based on parts the accounts will default as entered.

“Export FeedBack”, if checked will automatically generate an XML document containing all open MAX Orders. This document can also be generated as needed. It will be saved with a “FeedBack” folder within the designated XML folder.

MAX Connectors: Batch Sales Orders

Loading Orders: all XML documents in the XML folder will be processed and then moved to a “Processed” folder when the load process has complete and Audit XML document is saved in the “\Audit” folder within the designated XML folder. A summary of the loaded orders will be displayed from the Audit XML document.



The screenshot shows a software window titled "MAX Batch Sales Orders v1.0.2.1". The window has a menu bar with "Activity", "AuditView", "Export Open", "Preferences", and "Help". Below the menu bar is a yellow header bar that says "Load XML into MAX". The main area contains a table with the following data:

MAXOrder	CustomerPO	Customer	PartID	Quantity	Price	Value
20001146		CustID: 500 Anaheim Distribution72...	11000	100	100.55	\$10,055.00
					Order:	\$10,055.00
20001147	888-999	CustID: 0000001 Anaheim Distributio...	11000	100	100.55	\$10,055.00
			13000	100	100.55	\$10,055.00
					Order:	\$20,110.00
					Total:	\$30,165.00

At the bottom of the window, there is a status bar with the following information: "tschell", "MAX DSN: MyMAXDat", "XML: C:\Projects\BPTools\MAXXML\TesterXML", and "3 order XML Documents found."

MAX Connectors: Batch Sales Orders

XML formats: all the documents have the same formats and elements. The two generated documents are:

- 1) Audit of Loaded Orders: [MAXSOAudit.XML](#)
- 2) FeedBack of Open Sales Orders: [MAXSOFeedBack.XML](#)

```
?xml version="1.0"?>
<eMAXExact xmlns:xsi="http://www.w3.org/2001/XMLSchema-instance" xsi:noNamespaceSchemaLocation="MaxWebData.xsd">
<SO_Master_Table>
  <SO_Master>
    <ORDNUM_27>200369</ORDNUM_27>
    <CUSTID_27>500 </CUSTID_27>
    <GLXREF_27>000410000 </GLXREF_27>
    <STYPE_27>CU</STYPE_27>
    <STATUS_27>3</STATUS_27>
    <CUSTPO_27> </CUSTPO_27>
    <ORDID_27> </ORDID_27>
    <ORDDTE_27>2005-01-24</ORDDTE_27>
    <SHPCDE_27>Disneyland</SHPCDE_27>
    <REP1_27>NW01 </REP1_27>
    <SPLIT1_27>100</SPLIT1_27>
    <REP2_27> </REP2_27>
    <SPLIT2_27>0</SPLIT2_27>
    <REP3_27> </REP3_27>
    <SPLIT3_27>0</SPLIT3_27>
    <COMMIS_27>0</COMMIS_27>
    <TERMS_27>01</TERMS_27>
    <SHPVIA_27>01</SHPVIA_27>
    <XURR_27> </XURR_27>
    <FOB_27>Shipping Point </FOB_27>
    <TAXCD1_27>ATLCITY</TAXCD1_27>
    <TAXCD2_27>COBCNTY</TAXCD2_27>
    <TAXCD3_27>GASTATE</TAXCD3_27>
    <COMNT1_27> </COMNT1_27>
    <COMNT2_27> </COMNT2_27>
    <COMNT3_27> </COMNT3_27>
    <SHPLBL_27>0</SHPLBL_27>
    <INVCE_27>N</INVCE_27>
    <APPINV_27> </APPINV_27>
    <REASON_27> </REASON_27>
    <NAME_27>Anaheim Distribution </NAME_27>
    <ADDR1_27>7207 La Sienega Avenue </ADDR1_27>
    <ADDR2_27> </ADDR2_27>
    <CITY_27>Anaheim </CITY_27>
    <STATE_27>CA </STATE_27>
    <ZIPCD_27>90117 </ZIPCD_27>
    <CNTRY_27>USA </CNTRY_27>
    <PHONE_27> </PHONE_27>
    <CNTCT_27> </CNTCT_27>
    <TAXPRV_27> </TAXPRV_27>
    <FEDTAX_27>N</FEDTAX_27>
    <TAXABL_27>Y</TAXABL_27>
    <EXCRTE_27>1</EXCRTE_27>
    <FIXVAR_27>F</FIXVAR_27>
    <CURR_27>US </CURR_27>
    <RCLDTE_27>0001-01-01</RCLDTE_27>
    <TTAX_27>0</TTAX_27>
    <LNETAX_27>N</LNETAX_27>
    <ADDR3_27> </ADDR3_27>
    <ADDR4_27> </ADDR4_27>
    <ADDR5_27> </ADDR5_27>
    <ADDR6_27> </ADDR6_27>
    <MCOMP_27> </MCOMP_27>
    <MSITE_27> </MSITE_27>
    <UDFKEY_27> </UDFKEY_27>
    <UDFREF_27> </UDFREF_27>
    <SHPTHRU_27> </SHPTHRU_27>
  </SO_Master>
</SO_Master_Table>

<SO_Detail_Table>
```

MAX Connectors: Batch Sales Orders

```
<SO_Detail>
  <ORDNUM_28></ORDNUM_28>
  <LINNUM_28>01</LINNUM_28>
  <DELNUM_28>01</DELNUM_28>
  <STATUS_28>3</STATUS_28>
  <CUSTID_28>500</CUSTID_28>
  <PRTNUM_28>11000</PRTNUM_28 >
  <EDILIN_28 ></EDILIN_28>
  <TAXABL_28></TAXABL_28>
  <GLXREF_28 ></GLXREF_28>
  <CURDUE_28>2005-07-04</CURDUE_28>
  <QTLIN_28 ></QTLIN_28>
  <ORGDUE_28 > 2005-07-04</ORGDUE_28>
  <QTDEL_28></QTDEL_28>
  <CUSDUE_28 >2005-07-04</CUSDUE_28>
  <PROBAB_28>0</PROBAB_28>
  <SHPDTE_28>2005-07-04</SHPDTE_28>
  <SLSUOM_28></SLSUOM_28>
  <REFRNC_28></REFRNC_28>
  <PRICE_28 >100.55</PRICE_28>
    <ORGQTY_28>100</ORGQTY_28>
    <CURQTY_28>100</CURQTY_28>
    <BCKQTY_28>0</BCKQTY_28>
    <SHPQTY_28>0</SHPQTY_28>
  <CURSHP_28>0</CURSHP_28>
  <DUEQTY_28 >100</DUEQTY_28>
  <INVQTY_28>0</INVQTY_28>
  <DISC_28>0</DISC_28>
  <STYPE_28>CU</STYPE_28>
  <PRNT_28 >N</PRNT_28>
  <AKPRNT_28>N</AKPRNT_28>
  <STK_28></STK_28>
  <COCFLG_28></COCFLG_28>
  <FORCUR_28 >0</FORCUR_28>
  <HSTAT_28 >R</HSTAT_28>
  <SLSREP_28 ></SLSREP_28>
  <COMMIS_28 >0</COMMIS_28>
  <DRPSHP_28 ></DRPSHP_28>
  <QUMQTY_28>0</QUMQTY_28>
  <TAXCDE1_28 ></TAXCDE1_28>
  <TAX1_28 >0</TAX1_28>
  <TAXCDE2_28 ></TAXCDE2_28>
  <TAX2_28 >0</TAX2_28>
  <TAXCDE3_28 ></TAXCDE3_28>
  <TAX3_28 >0</TAX3_28>
    <MCOMP_28></MCOMP_28>
    <MSITE_28 ></MSITE_28>
  <UDFKEY_28 ></UDFKEY_28>
  <UDFREF_28 ></UDFREF_28>
  <DEXPFLG_28 ></DEXPFLG_28>
  <COST_28 >0</COST_28>
  <MARKUP_28 >0</MARKUP_28>
  <QTORD_28 ></QTORD_28>
</SO_Detail>
</SO_Detail_Table>
</eMAXExact>
```