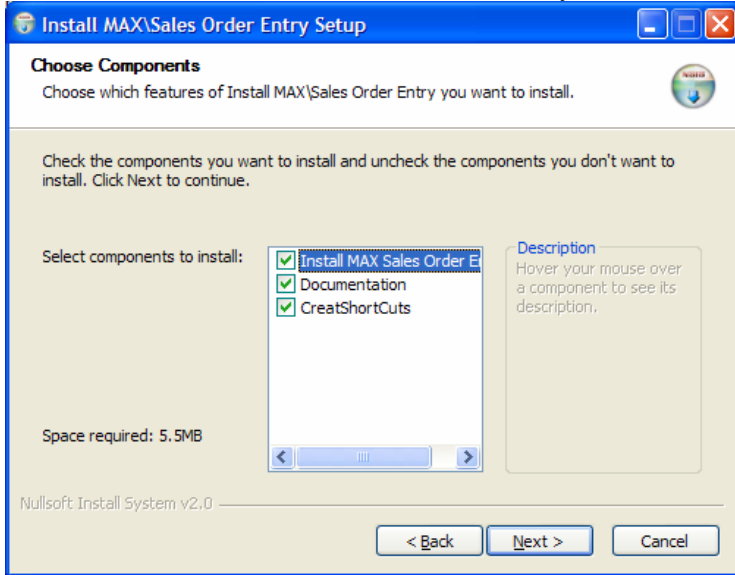


MAX Sales Order Entry

Purpose:

To provide an easy to use application for entering MAX Sales Orders / Credit Memos, with the ability to browse on both the MAX part and the Customer Parts.

Install: Run InstallMAXSalesOrderEntry



Setup:

This application uses the standard MAX functions to add, change and delete Sales Orders . In order to use these MAX functions: copy the following MAXUpdate files into the installed to folder or make them available from a search path:

MAX DLL

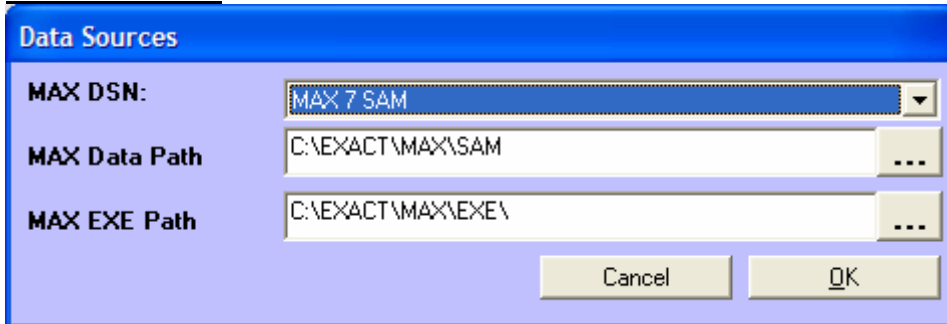
MAXEXEC2 DLL

MAXBTRV2 DLL

MAXORDR2 DLL

These files will be installed by the MAX Client Setup routine in \MAX\MFW2 and will reside in the server in \EXACT\MAX\NET\UPDATES\MFW2. As MAX is updated it is important to also update the files used by this application.

Data Sources:



This form can be called up from the main form to set or change the DSN and paths for MAX.

MAX Sales Order Entry

Main Form:

Order Comments.

A New Sales Order can be created by selecting File / New Order or with the corresponding short cut: Control / N.

Type	Sales Order	CustID	PO	Order Date	Ship To
CU	299005	25000		5/20/2004	HEWLETT PACKAF
CU	299004	25000		5/20/2004	HEWLETT PACKAF
CU	299003	25000		5/20/2004	HEWLETT PACKAF
CU	299002	25000		5/20/2004	HEWLETT PACKAF
CU	240000	25000		6/1/2004	HEWLETT PACKAF
CU	217047	25000		5/19/2004	HEWLETT PACKAF
CU	217046	25000		5/13/2004	HEWLETT PACKAF
CU	216991	25000	8988405	4/6/2004	NE HP DISTRIBUT
CU	216990	25000	8988452	4/6/2004	CA HP DISTRIBUTI
CU	216989	25000	8988450	4/6/2004	IN HP DISTRIBUTI
CU	216988	25000	8988449	4/6/2004	CA HP DISTRIBUTI
CU	216987	25000	8988446	4/6/2004	NE HP DISTRIBUT
CU	216986	25000	8988442	4/6/2004	IN HP DISTRIBUTI
CU	216985	25000	8988440	4/6/2004	CA HP DISTRIBUTI
CU	216984	25000	8988436	4/6/2004	NE HP DISTRIBUT
CU	216983	25000	8988434	4/6/2004	IN HP DISTRIBUTI
CU	216982	25000	8988433	4/6/2004	CA HP DISTRIBUTI
CU	216981	25000	8988432	4/6/2004	NE HP DISTRIBUT
CU	216980	25000	8988418	4/6/2004	IN HP DISTRIBUTI
CU	216979	25000	8988411	4/6/2004	CA HP DISTRIBUTI
CU	216978	25000	8988396	4/6/2004	IN HP DISTRIBUTI
CU	216977	25000	8988393	4/6/2004	CA HP DISTRIBUTI
CU	216976	25000	8988390	4/6/2004	NE HP DISTRIBUT
CU	216975	25000	8988374	4/6/2004	IN HP DISTRIBUTI

Double click on the order field will display the browser. Orders can be retrieved by entering the first digits of the order and/or by including the Cust ID.

Double clicking on a line will close the browser and display the selected order on the main form.

Options:

Enable Part Browsers.

Parts to show in Browser, sets the number of parts to display at a time.

Orders to show in Browser, sets the number of orders to display at a time.

MAX Sales Order Entry

Line Items:

A Double click on either MAX Part or Customer Part will display a part browser:

MAX PartID	Customer PartID	Description	UOM	Price	Taxed	Stock
62-0397-001	PA069A	KIT_HP v3K_GENERIC	EA	.00		Y
62-0397-002	PA069A	KIT_HP v3K_GENERIC	EA	.00	N	MAIN
62-0398-001		KIT_v3K_NOKIA_HTCP	EA	.00		N
62-0398-002		KIT_v3K_NOKIA_HTCP	EA	.00		N
62-0399-001		KIT_v3K_EXT_PWR_DI	EA	.00		N
62-0400-001		KIT_HPv3K_ALL_D00I	EA	.00		N
62-0401-001		KIT_HPv3K_CMOS_BA	EA	.00		N
62-0402-001		KIT_v3K_CC_PCH_STY	EA	.00		N
62-0402-002		KIT_v3K_CC_PCH_STY	EA	.00		N
62-0403-001		KIT_v3K_HFCC_PCH_S	EA	.00		N
62-0403-002		KIT_v3K_HFCC_PCH_S	EA	.00		N
62-0404-001		KIT_v3K_F00T_REPL	EA	.00		N
62-0405-001		KIT_v3K_CRY_CSE_ST	EA	.00		N
62-0405-002		KIT_v3K_CRY_CSE_ST	EA	.00		N
62-0406-001	PA064A	KIT_v3K_LG_STYLUS?	EA	.00		Y
62-0406-002	PA064A	KIT_v3K_LG_STYLUS?	EA	.00		N

Enter either part or the MAX Part or Customer Part and hit enter to see a list of Parts beginning with what has been entered. Depending on the Part requested the sequence will be either by MAX Part or Customer Part.

MAX Customer Order Entry

File Options MAX Data Source Help

Sales Order

SalesOrder
 CreditMemo

Order Number: 200034
 Order Date: 11/20/2003
 Customer ID: 100 Intel Corporation

Bill To: Intel Corporation
 2200 Tasman Boulevard
 Suite 100
 San Jose, CA 94404

Ship To: Boston - Boston, MA 07884
 Name: Boston Assembly
 Add1: 18554 Pilgrim Drive
 Add2:
 C.S.Z: Boston MA 07884
 Country: USA

Customer PO Number: 123456-ABC
 Terms: 01 - 2% 10 Net 30
 Ship VIA: 01 - Federal Express

F.O.B. Point:
 Ordered By: Bobbi Myrick
 Sales Representative: NW01 - John Bonham
 Status: Open

Line	Del	Quantity	Ship Qty	Part No	Customer Part Id	Description/Comments	UOM	Price	Due Date	Ext Price	Stock
01	01	25	25	11050	333-6666	Spec 4A-677LZ	EA	400.00	08/14/2004	10,000.00	FGI
02	01	25	25	13000		TEST UNIT 24 VOLT	EA	22.00	11/20/03	550.00	RMI
03	01										

2:22 AM TIM Logged in. MAX DSN: MAX 7 SAM

Delete Notes			
SO Note	Print On Orders	Print On Invoices	
1 Notes 100	N	N	
2 Notes 200	N	N	
5	N	N	
4 Double Click on	Y	N	
5 Print Switch to	Y	Y	
6 Toggle settings=====>	N	N	

Hit enter on the line item grid to navigate to next input field and use the down arrow to add a new line. Use Tab key to set the print flags.

STOCK ID's	Description	UserDefined Key	UserDefi
ADS	Awaiting Disposition	.cp.	
BASE1	BASE INV		
BASE1-01	BASE INV		
BASE1-02	BASE INV		
CON	Consignment Inventory	.cp.	
FGI	Finished Goods Inventory	F	
INI	Incoming Inspection		
MSI	Main Stores Inventory	.cp.	
MRB	Material Review Board		
OBS	Obsolete Inventory	0	
QI	QUALITY INSPECTION	Q	
QCI	Quality Control Inventory		
RMA	RMA RETURNS	.cp.	
RMI	Raw Material Inventory	.cp.	
RMI/OVER	Raw Material Inventory		
WIP	WIP Floor Locations		