

# MAXBar

MAXBar is designed to be used with bar code scanners to process transactions in MAX, using abbreviated input screens to step the user through a fixed sequence of entry fields.

## Requirements:

1. Pervasive Client must be installed on the work station
2. Access to MAX data, with full update rights.
3. MAXUpdate files for processing MAX transactions:

MAXUpdate is a set of DLL's that provide a library of MAX functions. **These files need to be either in the same directory as MAXBar or on a search path.** They can be found on the server at \Exact\MAX\NET\UPDATE\MFW2. These files are provided by Kewill.

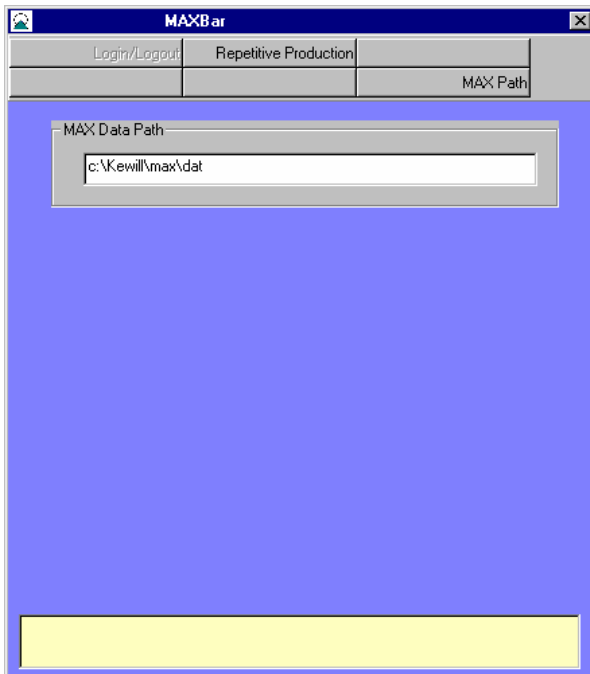
MAXEXEC2 DLL
--------------

MAXBTRV2 DLL
--------------

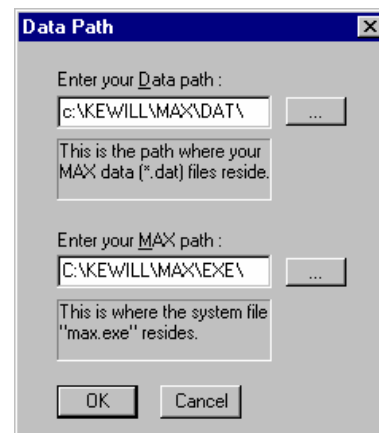
MAXTRAN2 DLL
--------------

**Installation:** Run Setup.exe and follow the prompts.

**Execution:** Click on the installed icon. You may be required to enter the path to MAX data the first time. This path can be changed at any time by clicking on the MAX Path button. MAXBar will use the same registry entries that MAX uses to locate the data.



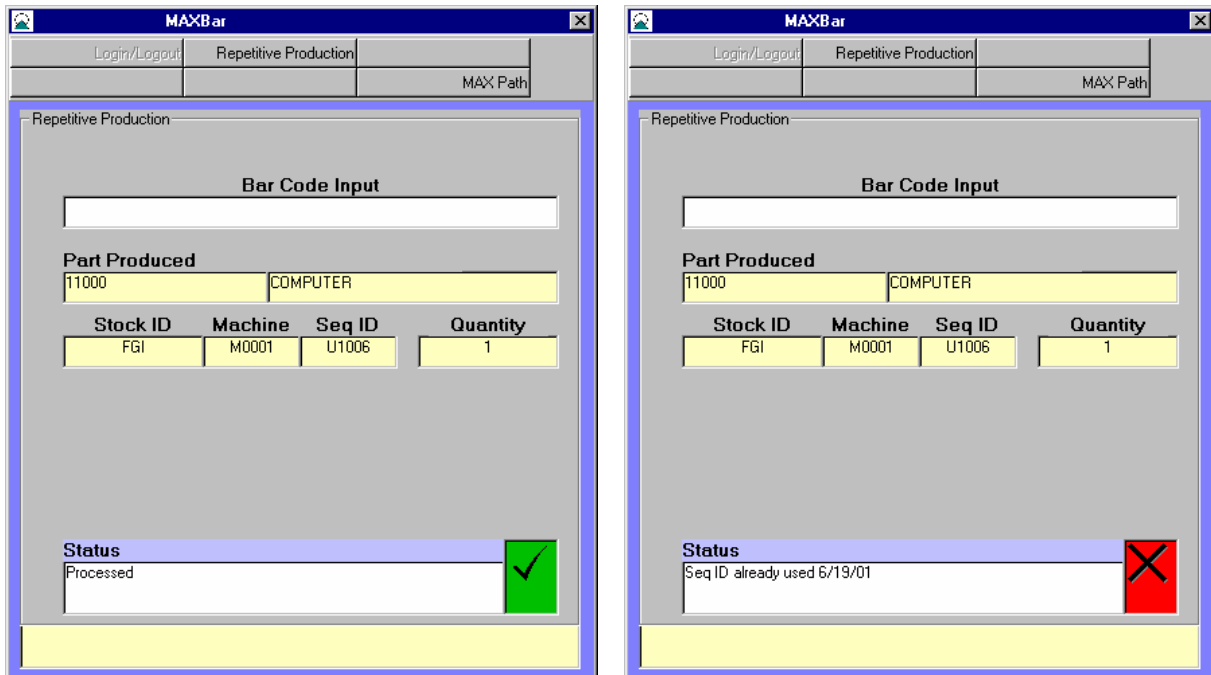
*If MAX is not installed on the same workstation as MAXBar a one time prompt will appear for the location of the MAX executables:*



# MAXBar

## Repetitive Production (No Lot/SN)

Click on the Repetitive production button.



This function has only one input field to be scanned, which contains the following:

<b>Part ID</b>	1 – 15 (padded with spaces)
<b>Stk ID</b>	16 -18
<b>Machine ID</b>	19 -21 (entered in transaction Reference)
<b>Unique ID</b>	22 -30 (entered in transaction UDFKey)

Scanning or entering the “Bar Code Input” field will trigger the transaction. If there are errors such as insufficient stock of a component the red X will appear along with a message describing the error. If the transaction processes a green check will be displayed.

The “Unique ID” will be verified to be unique by looking it up in Transaction History. If it has already been processed an error message will appear.



# MAXBar

## Login/Logout:

The screenshot shows the MAXBar Login/Logout window with the following data:

Employee ID			
1000	R KIDDON		

Order			
500019	11000	1000	04/28/2000

Op Seq		
0010	Assemble Per Print	1000

Buttons: Login

Options:  AutoReceive,  BackFlush

The screenshot shows the MAXBar Login/Logout window with the following data:

Employee ID			
1000	R KIDDON		

Order			
500019	11000	1000	04/28/2000

Op Seq		
0010	Assemble Per Print	1000

Buttons: Logout

Fields: Good Quantity (5), Scrap Quantity (1), Actual Hours ( )

Options:  AutoReceive,  BackFlush

The Login function updates the MAX Labor tracking tables to indicate that the employee is working on the specified order. The Logout function records the elapsed time as labor posting transactions. If the AutoReceive option is selected when the last step is processed a receipt to stock is processed. If the Backflush option is selected the component issues are also processed.

