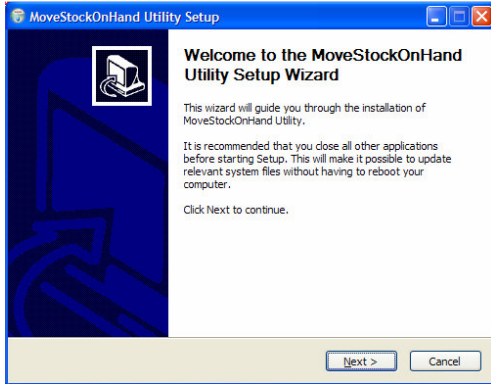


MAX Move Stock On Hand Utility

Function: This utility is used to transfer all stock from one Stock ID to another.

Install: Run InstallMoveStockOnHand.exe

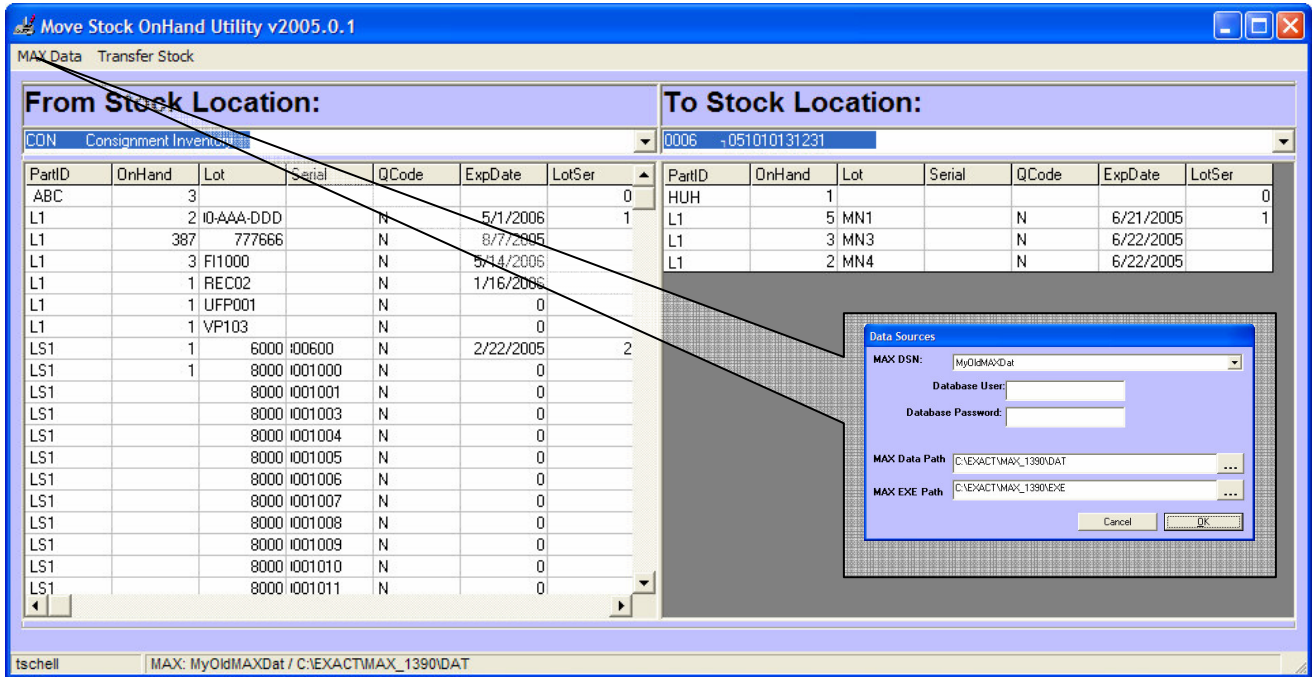


Copy the following MAXUpdate files into the application folder or make them available from a search path:

MAX DLL'S
MAXEXEC2 DLL
MAXBTRV2 DLL
MAXTRAN2 DLL

These files will be installed by the MAX Client Setup routine in \MAX\MFW2 and will reside in the server in \EXACT\MAX\NET\UPDATES\MFW2. As MAX is updated it is important to also update the files that are used by the application

Run:



1. Select From and To locations and click the Transfer Stock button on the toolbar to process.