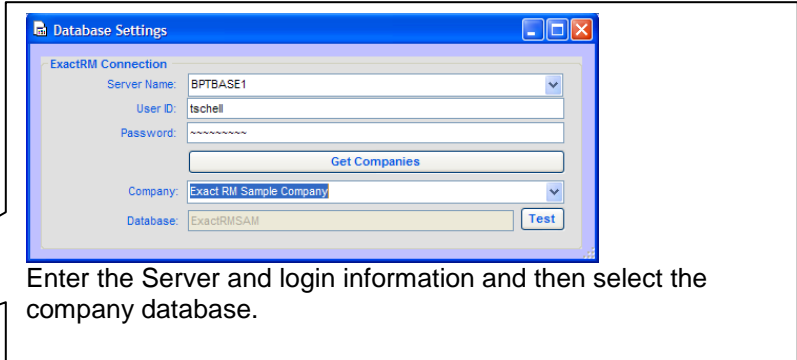
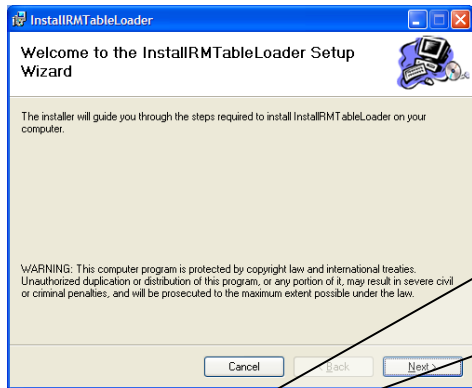


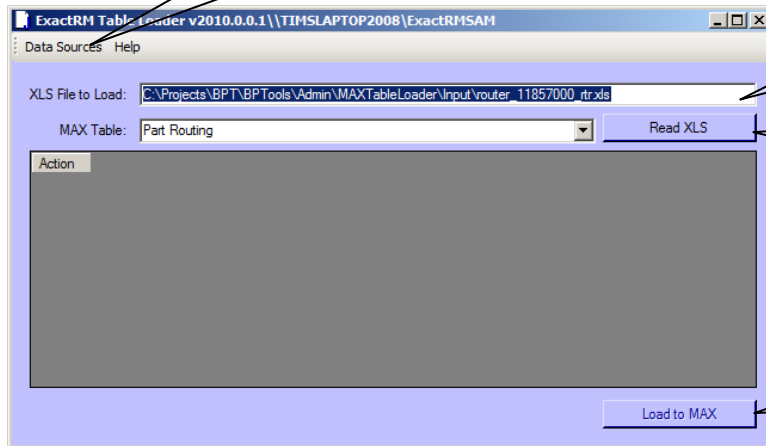
MAX Table Loader for SQL Server

Function: the RMTTableLoader loads data into MAX from spreadsheet source files.

Installation: Run InstallRMTTableLoader.MSI and follow the prompts.



Run:



Select input XLS.

Click "Read XLS" to read and display the Spreadsheet data.

Click "Load to MAX" button to update MAX.

MAX Table Loader for SQL Server

Load GL Override Account Codes:

Input Spreadsheet:

A	B	C	D	E
GL Reference	Account Number	Account Description	UDFRef	UDFKey
TRN	1000-45000-0010	TRAINING INDIRECT	PR	TRAINING INDIRECT
MCH	1000-4510-0010	MACHINE INDIRECT	PR	MACHINE INDIRECT
VAC	1000-5000-0010	VACATION	PR	VACATION
SIK	1000-5010-0010	SICK TIME	PR	SICK TIME

Read and Updated:

Action	GL Reference	Account Number	Account Description	UDFRef	UDFKey
Added	TRN	1000-45000-0010	TRAINING INDI...	PR	TRAINING INDI...
Added	MCH	1000-4510-0010	MACHINE INDIR...	PR	MACHINE INDIR...
Added	VAC	1000-5000-0010	VACATION	PR	VACATION
Added	SIK	1000-5010-0010	SICK TIME	PR	SICK TIME

MAX:

Default GL	Account Type	GL Account	User Defined Key	User Defined Reference
MCH		1000-4510-0010	MACHINE INDIRECT	PR
MSC		000-6780-00	Miscellaneous Expenses	000678000 -222-123456
RDA		000-5200-00	CPP Exper R&D Product A	000520000 -222-123456
RDB		000-5210-00	QPP Exper R&D Product B	000521000 -222-123456
SIK		1000-5010-0010	SICK TIME	PR
SUP		000-5700-00	Non-Invent Office Expenses	000570000 -222-123456
TRN		1000-45000-0010	TRAINING INDIRECT	PR
VAC		1000-5000-0010	VACATION	PR

MAX Table Loader for SQL Server

Load Cost Sets:

Input SpreadSheet: empty cells will be ignored ; zeros will update.

	A	B	C	D	E	F	G	H
1	Part Identifie	NewMatl	NewSub	NewLabor	NewVOH	NewFOH	NewHrs	NewYield
2	13000	\$1.10000		\$55.00000	\$10.00000			
3	HUH	\$76.60000				\$1.70000		
4	KB1	\$331.89660	\$13.66000	\$66.00000			\$1.00000	\$95.00000
5	KB2	\$33.00000				\$1.89000		
6	L1	\$33.56700		\$33.00000	\$12.50000			
7	L2	\$44.55500						
8	LS1	\$334.66000		\$21.89000				

Read and Updated:

Action	PartID	Material	Sub	Labor	VOH	FOH	Hrs
Part N/F in CostSet 07	HUH	76.6				1.7	
Part N/F in CostSet 07	KB1	331.8966	13.66	66			1
Part N/F in CostSet 07	KB2	33				1.89	
Updated	L1	33.567		33	12.5		
Part N/F in CostSet 07	L2	44.555					
Part N/F in CostSet 07	LS1	334.66		21.89			
Part N/F in CostSet 07	RRR	30000					

MAX:

	Cost Date	Unit Cost	Material Cost	Material Burden %	Labor Cost	Labor Burden %	Hours	Yield %	Su
00 Part Master	01/03/2006	44.7700	44.7700	0.0000	0.0000	0.0000	0.0000	100	
Last Year's Standard	10/27/2006	66.1000	1.1000	0.0000	55.0000	10.0000	0.0000	100	
Last Quarter's Standard	08/31/1999	12.0000	12.0000	0.0000	0.0000	0.0000	0.0000	100	
Average Cost	08/31/1999	12.0000	12.0000	0.0000	0.0000	0.0000	0.0000	100	
Engineering Test	03/29/2004	37.0000	37.0000	0.0000	0.0000	0.0000	0.0000	100	
Marketing Tests		0.0000	0.0000	0.0000	0.0000	0.0000	0.0000	100	
Test 1		0.0000	0.0000	0.0000	0.0000	0.0000	0.0000	100	
Test 2	08/31/1999	12.0000	12.0000	0.0000	0.0000	0.0000	0.0000	100	
Pending Rollover		0.0000	0.0000	0.0000	0.0000	0.0000	0.0000	100	

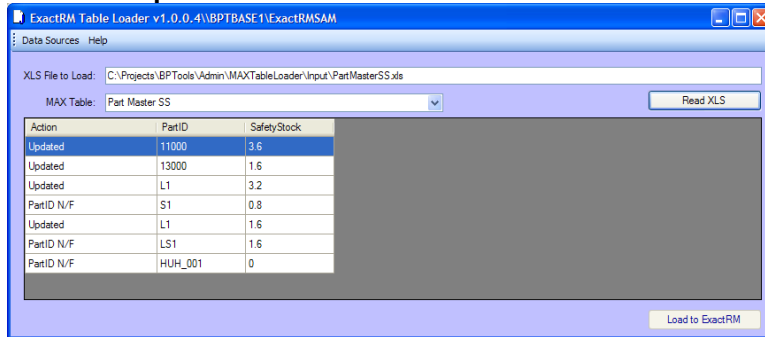
MAX Table Loader for SQL Server

Load Part Master Safety Stock:

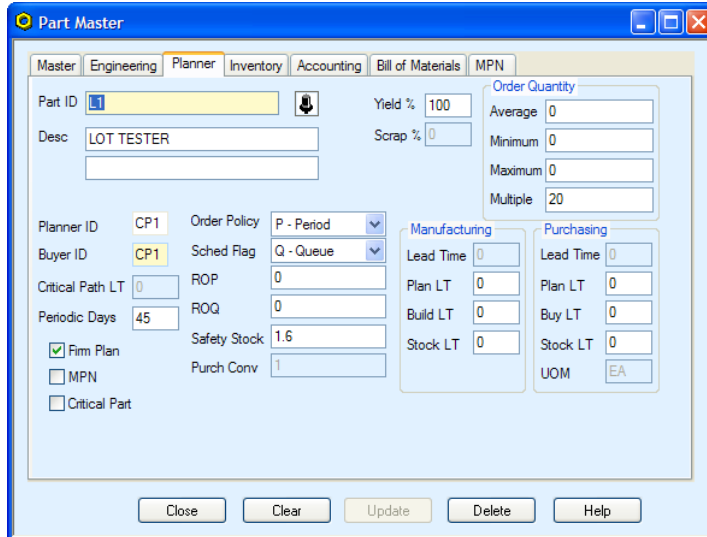
Input SpreadSheet:

A	B	C	D	E	F	G	H	I
SKU	Part #	Category	Department	On Hand Qty	B/O Qty	Weekly ROS	Stock Class	Safety Stock
11000	Organic Goat Cheese #33	Accessories	Prep-Acc	8	2	0.9	BTS-30	3.6
13000	Free Range Eggs Large	Accessories	Prep-Acc	30	0	0.4	BTS-30	1.6
L1	Organic Winter Wheat	Accessories	Prep-Acc	8	2	0.8	BTS-30	3.2
S1	Soy Powder	Accessories	Prep-Acc	9	0	0.2	BTS-30	0.8
L1	Lot Tester	Accessories	Prep-Acc	3	0	0.4	BTS-30	1.6
LS1	Lot Serial Tester	Accessories	Prep-Acc	6	0	0.4	BTS-30	1.6
HUH_001	Huge Eggs							

Read and Updated:



MAX:



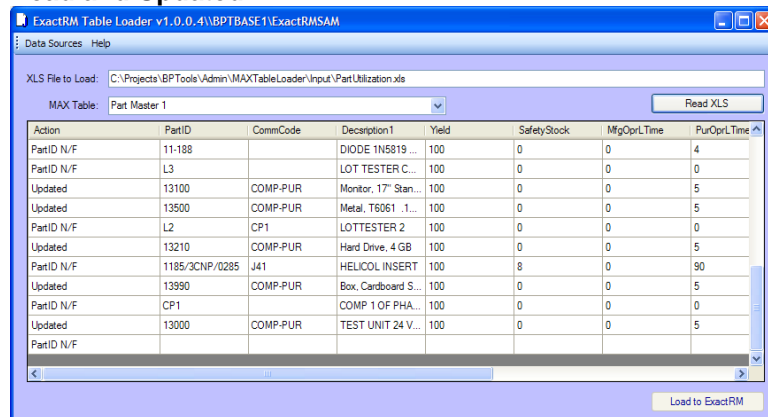
MAX Table Loader for SQL Server

Load Part Master 1: will update Commodity Code, Description 1, Yield, Safety Stock, MfgOpr Leadtime (MFG LT will be recalculated), PurOpr LeadTime (Pur LT will be recalculated), and Part Type.

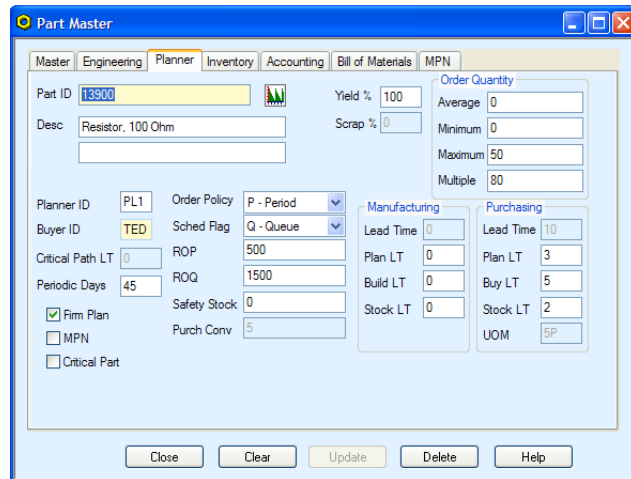
Input Spreadsheet:

A	B	C	D	E	F	G	H	I	J	K	L
PRTNUM_15	COMCDE_01	PMDES1_01	YIELD_01	SAFSTK_	MFGOPR_	PUROPR_	COST_01	CSTCNV_	IssueQty	IssueRange	TYPE_01
CSS30		CSSCOMP	100	0	0	0	0	1	6	1 < 1000	B
11-888			100	0	0	0	0	1	301	1 < 1000	B
13105	COMP-PUR	Monitor Case	100	0	0	10	3	1	98	1 < 1000	B
13400	COMP-PUR	Microprocess	100	0	0	5	250	1	6	1 < 1000	B
13700	COMP-PUR	Memory 32 M	100	0	0	5	20	1	5	1 < 1000	B
13800	COMP-PUR	Printed Circuit	100	0	0	5	1.5	1	3	1 < 1000	B
CP3		TESTER	100	0	0	0	0	1	45	1 < 1000	B
CSS20		CSSCOMP	100	0	0	0	0	1	43	1 < 1000	B
CSS40		CSSCOMP	100	0	0	0	0	1	71	1 < 1000	B
D2		MA TESTER	100	0	0	0	0	1	4	1 < 1000	B
SALT	CP1	HCL 99.5 PUF	100	0	0	0	0	1	25	1 < 1000	B
13900	100200	Resistor, 100	100	0	0	5	0.008	5	103	1 < 1000	D
SUGAR	CP1	CANE 50 # BA	100	0	0	0	0	1	151	1 < 1000	B
CSS10		CSSCOMP	100	0	0	0	0	1	4	1 < 1000	B
SEEDS	CP1	RYE SEEDS	100	0	0	0	0	1	155	1 < 1000	B
FLOUR		WHEAT MILL	100	0	0	0	0	1	0	1 < 1000	B

Read and Updated:



MAX:



MAX Table Loader for SQL Server

Load Part Routing: load and reload Part Routing. This function will replace the current part Routing.

Input Spreadsheet:

A	B	C	D	E	F	G	H	I	J	K	L	M	N	O	P	Q	R	S	T	U	V	
PRTRNUM_12	OPRSEQ_12	OPRID_12	WRKCTR_12	OPRDES_12	RUNTIM_12	SETTIM_12	REVDTE_12	OPRTYP_12	STDTPY_12	QTYPER_12	TOOL	SUBCT1	PSCRAP	ASCRA	SETEXT	SETINC	MOVDA	APRDBY	EFFDTE_12	MCOMP	MSITE	UDI
L1	0001		CRB	PICK KIT	0	0	2009/07/23	U	E	1			0	0	0	N		0	2009/07/23			
L1	0010		MANIN	IPC/WHMA A-620 CLASS II	0	0	2009/07/23	C	E	1			0	0	0	N		0	2009/07/23			
L1	0020		MANIN	PROCESS	0	0	2009/07/23	C	E	1			0	0	0	N		0	2009/07/23			
L1	0030		MANIN	BOM REV A	0	0	2009/07/23	C	E	1			0	0	0	N		0	2009/07/23			
L1	0040		MANIN	ASSY REV A	0	0	2009/07/23	C	E	1			0	0	0	N		0	2009/07/23			
L1	0050		MANIN	AEGIS PROC REV A	0	0	2009/07/23	C	E	1			0	0	0	N		0	2009/07/23			
L1	0070		BADWC	CUT WIRE REV A	0	0	2009/07/23	U	E	1			0	0	0	N		0	2009/07/23			
L1	0080		EASSY	STRIP ALL LEADS REV A	0	0	2009/07/23	U	E	1			0	0	0	N		0	2009/07/23			
L1	0090		EASSY	WIRE INSPECTION	0	0	2009/07/23	U	E	1			0	0	0	N		0	2009/07/23			
L1	0100		EASSY	CRIMPPING REV A	0	0	2009/07/23	U	E	1			0	0	0	N		0	2009/07/23			
L1	0110		EASSY	CRIMPPING INSPECTION	0	0	2009/07/23	U	E	1			0	0	0	N		0	2009/07/23			
L1	0120		EASSY	PLUG/CONNECTORS REV A	0	0	2009/07/23	U	E	1			0	0	0	N		0	2009/07/23			
L1	0130		EASSY	PLUG/CONN INSPECTION	0	0	2009/07/23	U	E	1			0	0	0	N		0	2009/07/23			
BAD PART1	0010		EASSY	MANUF. DEVIATION	0	0	2009/07/23	U	E	1			0	0	0	N		0	2009/07/23			
BAD PART1	0020		EASSY	FINAL INSPECTION	0	0	2009/07/23	U	E	1			0	0	0	N		0	2009/07/23			
BAD PART1	0030		EASSY	FINAL REWORK	0	0	2009/07/23	U	E	1			0	0	0	N		0	2009/07/23			
BAD PART1	0040		EASSY	FINAL RE-INSPECT	0	0	2009/07/23	U	E	1			0	0	0	N		0	2009/07/23			
BAD PART1	0050		EASSY	FINISHED GOODS	0	0	2009/07/23	U	E	1			0	0	0	N		0	2009/07/23			

Read and Updated:

MAX: