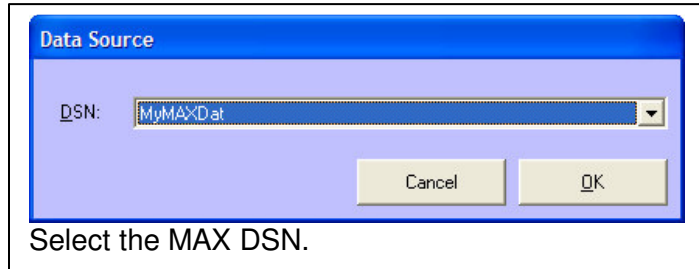
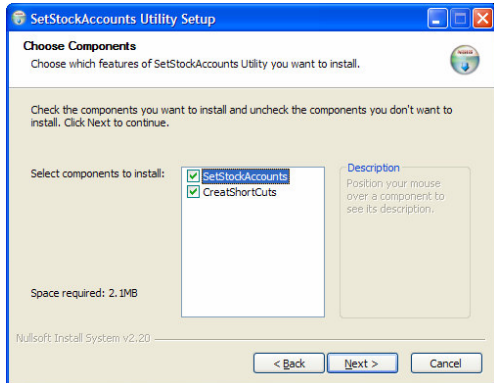
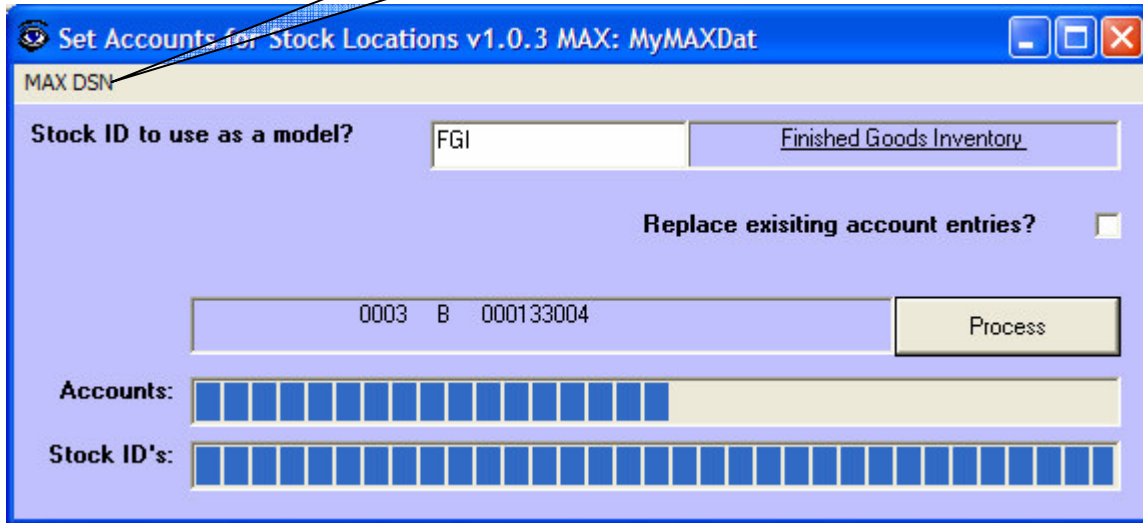

MAX Set Stock Accounts Utility

MAX Account Utilities: the purpose of this tool is assign GL Accounts to a batch of Stock ID's based on a template Stock ID. All account entries for the selected template stock ID will be created for all other stock ID's.

Install:



Main Form:



1. Select the template Stock ID
2. Select whether to replace existing entries.
3. Click "Process" button.