

MAX™ Data Collection Monitor



* B A L A N C E P O I N T *
Copyright 1999 by Nick Johnson

Installation Manual

MAX SQL Server Version 2008



Balance Point
Technologies

Revised: February 10, 2011

MAX™ (SQL Server) Data Collection Monitor - Installation

Installation

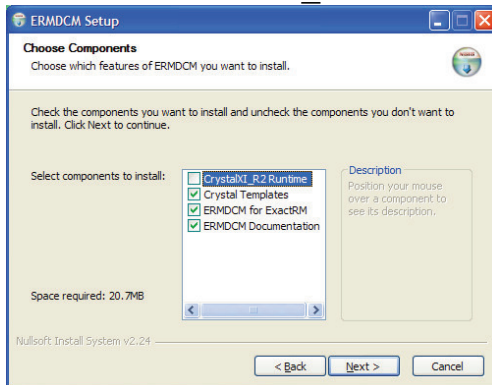
The MAX Data Collection Monitor requires Windows 2000, Windows 2003 or Windows XP, which is connected to a network using TCP/IP protocols. The PC must have access to both the data collection devices and MAX data. A Pentium or better machine with at least 2 GB of RAM and 500MB of free disk space is recommended. The monitor program functions as a server to the data collection devices and will typically have several simultaneous users. Therefore installing the application on a dedicated computer will insure optimum service. Performance will vary depending on the level of activity, the throughput on the network and the resource load of the installed-to machine.

The monitor program functions as a server to the data collection devices and will typically have several simultaneous users. Therefore, installing the application on a dedicated computer will insure optimum service.

Updating a Currently Installed Version

As a precaution, make sure that you have a Backup of MDCParams.MDB, extMDCM.MDB and all Crystal Report files, which are in the application folder.

Run InstallERMDCM_2008.exe and select desired components:



1. ERMDM uses MAXUpdate for processing standard transactions. MAXUpdate is a set of DLL's that provide a library of MAX functions. MAXUpdate is a separate module provided by Exact, please consult with the MAXUpdate documentation for more information.
2. If this is a new installation Run ConfigScreens.EXE to load your configuration. Select the same directory that you used to install the application. If you are

upgrading from MDCM v2007 for MAX 4, copy the current version of MDCParams.MDB into the ERMDM application folder. This file contains yours screens.

3. Make the following MAXUpdate files available to ERMDM from a search path:

MAX DLL'S
MAXEXEC2 DLL
MAXTRAN2 DLL
MAXORDR2.DLL

These files will be installed by the ExactRM Client Setup routine in \Exact\RMClient\EFW and will reside in the server in \ExactRM\RMServer\NET\UPDATES\EFW. As ExactRM is updated it is important to also update the files that are used by the ERMDM application.

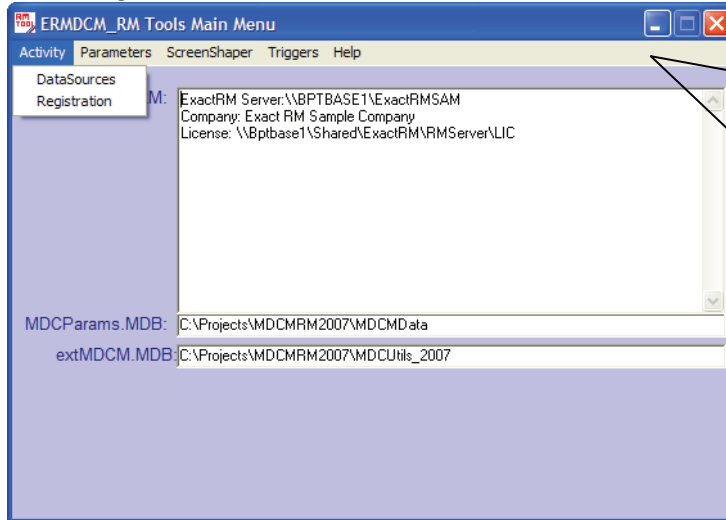
MAX™ (SQL Server) Data Collection Monitor - Installation

The following files must reside in the ERMDCM application folder:

MAX DLL'S
ERMRemCL.DLL
ExactRMEnc DLL

ExactRMDev.DLL is not needed by MAX but will be included with ERMDCM installation.

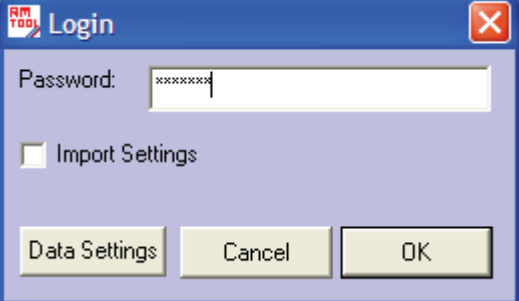
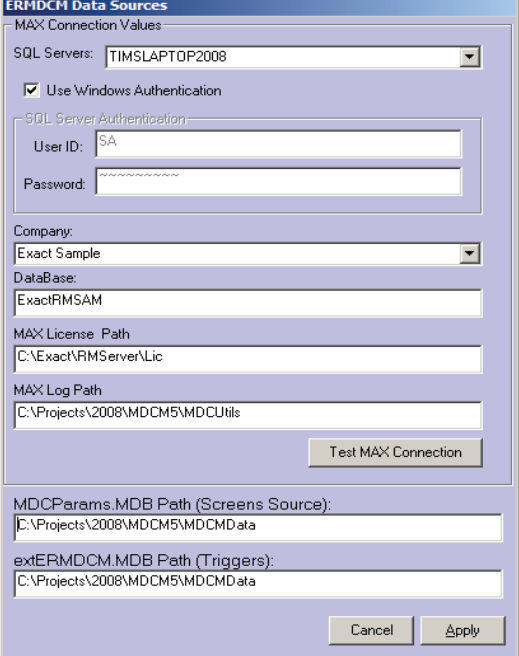
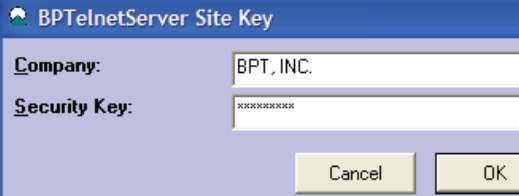
ERMDCM Tools is used to administer parameters and options for MDCM with the following functions:



1. Parameters - settings needed to run MDCM
2. ScreenShaper - customizing screens
3. Triggers- setup Triggers
4. Data Paths - set or change MAX and MDCM data paths.
5. Register- enter the user registration
6. Support - Support Web Site

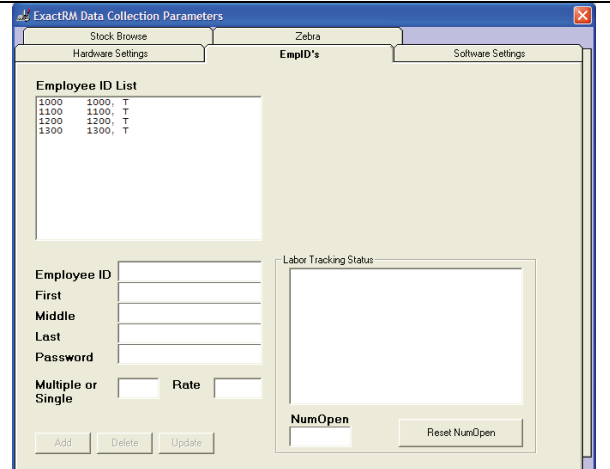
MAX™ (SQL Server) Data Collection Monitor - Installation

Ten Implementation Steps: after the software has been installed the following steps are required to make it functional. To begin, start the MDCM Tools.

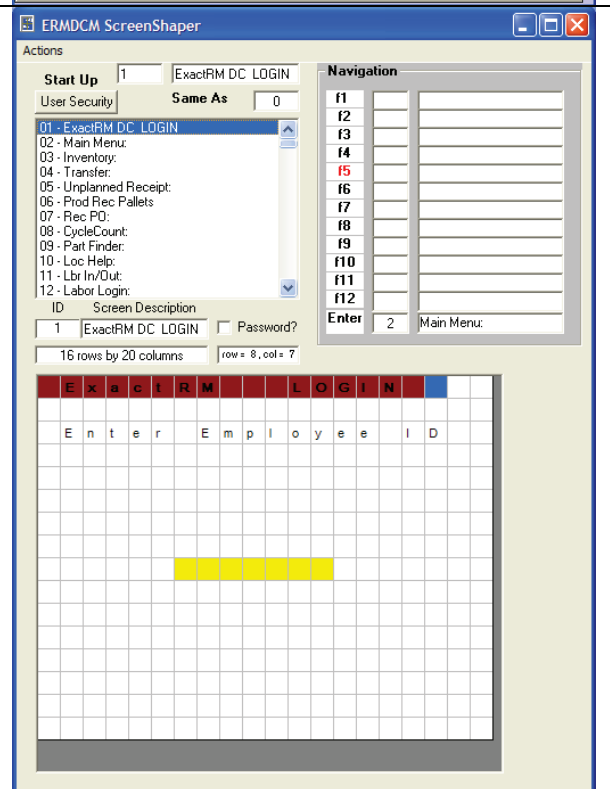
1	Login - default password is CYCLONE	 A dialog box titled "Login" with a red "X" in the top right corner. It contains a "Password:" label followed by a text input field containing "xxxxxxx". Below the input field is a checkbox labeled "Import Settings" which is unchecked. At the bottom are three buttons: "Data Settings", "Cancel", and "OK".
2	Set the Data Source and Data Paths. This should be set to a test data set to begin with to allow for testing and training. The locations for MDCParams.MDB (Screen Source) and extMDCM.MDB (Triggers) will default to the application folder.	 A dialog box titled "ERMDM Data Sources" with a red "X" in the top right corner. It contains several sections: "MAX Connection Values" with a dropdown menu for "SQL Servers" set to "TIMSLAPTOP2008" and a checked checkbox for "Use Windows Authentication"; "SQL Server Authentication" with "User ID:" set to "SA" and an empty "Password:" field; "Company:" with a dropdown menu set to "Exact Sample"; "DataBase:" with a text field containing "ExactRMSAM"; "MAX License Path" with a text field containing "C:\Exact\RMServer\Lic"; "MAX Log Path" with a text field containing "C:\Projects\2008\MDCM5\MDCUtils"; and a "Test MAX Connection" button. Below these are two text fields for "MDCParams.MDB Path (Screens Source):" and "extERMDM.MDB Path (Triggers):", both containing "C:\Projects\2008\MDCM5\MDCMData". At the bottom are "Cancel" and "Apply" buttons.
3	Register the software. You should have received a registration key which activates the software.	 A dialog box titled "BPTelnetServer Site Key" with a red "X" in the top right corner. It contains two text input fields: "Company:" with "BPT, INC." and "Security Key:" with "xxxxxxx". At the bottom are "Cancel" and "OK" buttons.

MAX™ (SQL Server) Data Collection Monitor - Installation

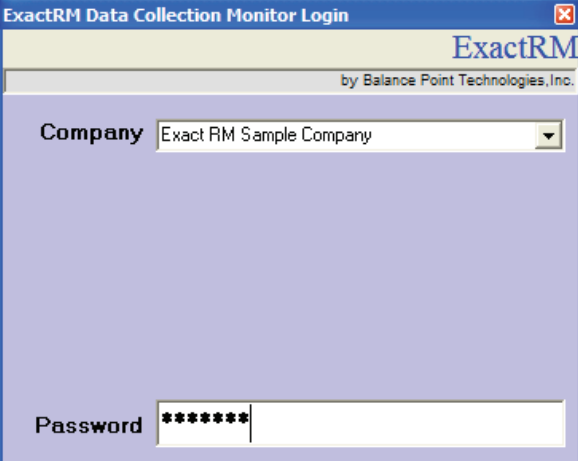
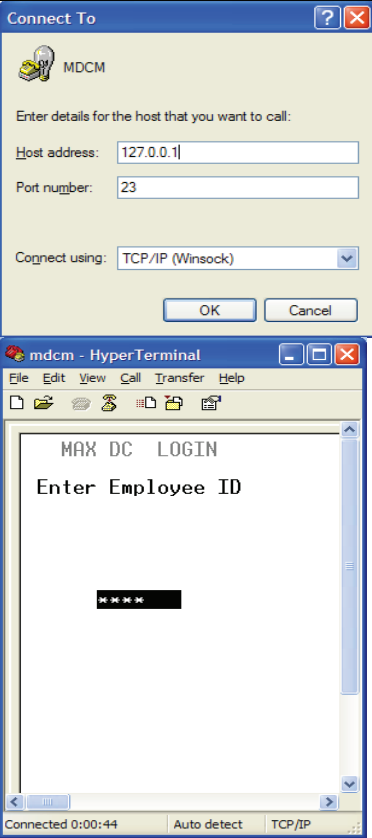
4 Make sure that there are entries in the MAX Employee Master. If you do not have MAX Labor Tracking then you will need to use the EmplID's maintenance tab to enter the users.



5 Screen startup, formats, navigation and security. The screens will be functional as-is, but can be modified using the ScreenShaper tool as needed.



MAX™ (SQL Server) Data Collection Monitor - Installation

<p>6</p>	<p>Start the Monitor.</p> <ol style="list-style-type: none"> 1. Select the company. 2. The Default Password is CYCLONE. 	
<p>7</p>	<p>Connect a Client. HyperTerminal which comes with Windows can be used as a client as can numerous other terminal emulation clients.</p> <p>ERMDCM uses function keys 1 -12 for screen navigation. HyperTerminal requires that num lock to be on for the keys to work.</p>	
<p>8</p>	<p>Training: ScreenShaper, Parameters, Triggers and User.</p>	
<p>9</p>	<p>Pilot Test: Labels and procedures. Where are the bar codes coming from? When, where and how are labels generated?</p>	
<p>10</p>	<p>Go Live</p>	

MAX™ (SQL Server) Data Collection Monitor - Installation

Please see the User's Manual for more information.

Support:

- 1) <http://www.maxtoolkit.com> MAXTools Support (Requires a User / Password)
- 2) support@bpttechnologies.com
- 3) 847 328-7911
- 4) MAX tech Support 800 number

Support Site:

MAXToolkit Support Center - Microsoft Internet Explorer

File Edit View Favorites Tools Help : Google - Address http://www.maxtoolkit.com/Portal/BVS/DesktopDefault... Go

Search the Web - Go Visual Bookmarks Pop-up Bin Search Results Viewpoint

Welcome tim! Portal Home Portal Documentation Logout

MAXToolkit Support Center

Home Discussions Adv Forecast Consignment LabMan LeanMAX MAX Changer MAXToolBox **MDCM** SuperZap Admin

Installers

- MDCM v2005 for MAX Batch 1324 and later
- Legacy MDCM for Prior versions of MAX

Quick Launch

- Crystal Templates
- Creative Solutions
- Users Manual
- Installation Guide
- Bar Code Information
- On Line Support

News

Change History - view the history of changes.

Status and Information

Latest Builds by MAX Version		Updated:
MAX (1324+) : 7	MAX 3.7 : 126	MAX 3.6 : 288
MDCM Version 2005.0.1	MDCM Version 3.7.1	MDCM Version 3.0.1

Version 2005 has been released for MAX Batch 1720 and is compatible with 1324 and newer. This version of MDCM includes an improved user interface, 100% SQL compliance and improved integration with MAX. It is very important to be compliant with MAX Gold Standards.

Pervasive 8.6 is strongly recommended. Particular attention should be paid to the following Pervasive Server Settings:

- Max MicroKernel Memory Usage (Note: 90% is probably too high for optimum SQL performance)
- Allocate Resources at Startup - depends on server.
- Back to Minimal State if Inactive - depends on server.

It may also be necessary to install the latest Microsoft Data Access Components (an option in the MDCM Install set.)

Recent Enhancements: Download [NewMDCMScreens](#) for the latest public screens.

TelnetClients

(tel net) (n.) A terminal emulation program for TCP/IP networks such as the Internet. The Telnet program runs on your computer and connects your PC to a server on the network. You can then enter requests through the Telnet program which are executed on the server. This enables you to control the server and communicate with other servers on the network. Telnet is a common way to remotely control Web Servers.

We have tested the following Telnet Clients and have found them to work. They may be used for an inexpensive client setup using an otherwise obsolete PC as a workstation.

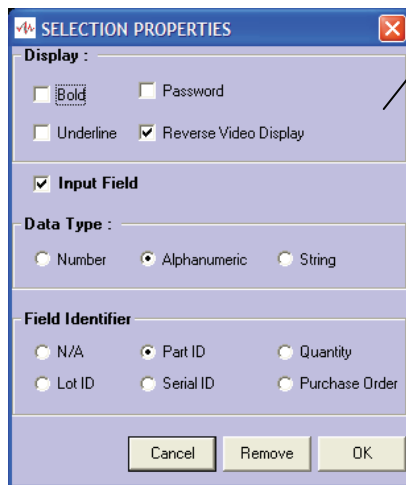
MochaSoft offers solutions that help you quickly and cost-effectively connect via Telnet that will run in a variety of environments including PCs, Palm and Pocket PC devices.

Updating Screens

The ScreenShaper tool will look in the directory for NewMDCMScreens.MDB which will contain a table called SidNav which has in it copies of any new screens which may have been created. All screens in this table will be imported into MDCParams.MDB to be used by the MAX Data Collection Monitor. Navigation for existing screens will be kept. The NewMDCMParams.MDB will be deleted once it has been imported.

Changing Screen Fields

To change the attributes of a field, place the cursor on the field and double click. To lengthen or move a field, click on the “Remove” button. Add the field back by highlighting the cells and hitting control /E.

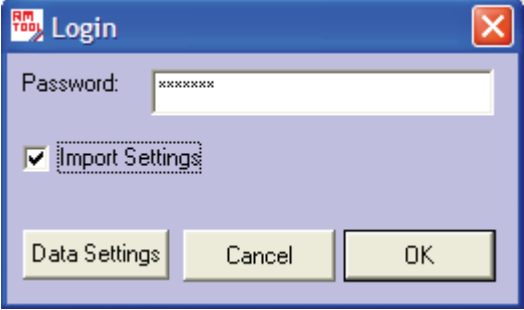


Input fields are identified by their sequence on the screen. Generally it is not possible to delete an input field. Labels can be removed or modified as needed. To hide an input field, for example if you don't use serial control, and want to hide the serial labels and input fields:

- 1) Remove the label
- 2) Remove the field
- 3) Add the field back as a one character string Input field, without distinguishing “Display” attributes. Place it in sequence on the screen wherever you have room.

MAX™ (SQL Server) Data Collection Monitor - Installation

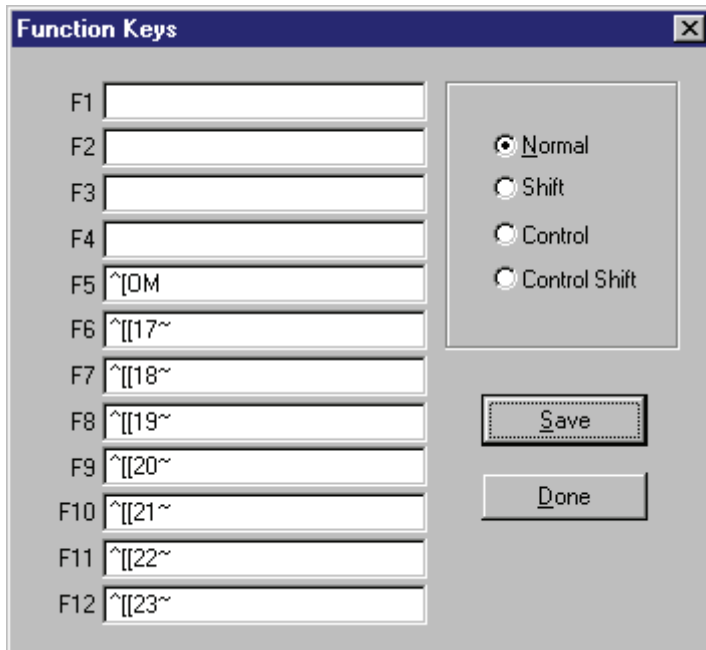
Moving to a New Computer:

1	Run InstallERMDCM_2007.exe on the new computer.	
2	Copy the following files from the current installation:	1) MDCParams.MDB 2) extMDCM.MDB 3) MDCMRegs.reg 4) BPTNSRegs.reg
3	On new computer, start ERMDCM Tools Login - default password is CYCLONE Check "Import Settings" to import all the settings from the current installation.	
4	Make MAX DLL's available with a search path. (See installation above.)	1) MAXECEC2.DLL 2) MAXORDR2.DLL 3) MAXTRAN2.DLL
5	If the new IP address is different than the current IP, update the clients to connect to the new address (or name.)	

MAX™ (SQL Server) Data Collection Monitor - Installation

Simpterm (Shareware) Telnet Client

Function Keys: Using the Options/Function Keys Tab - make the following entries:



The 'Function Keys' dialog box is shown with the following configuration:

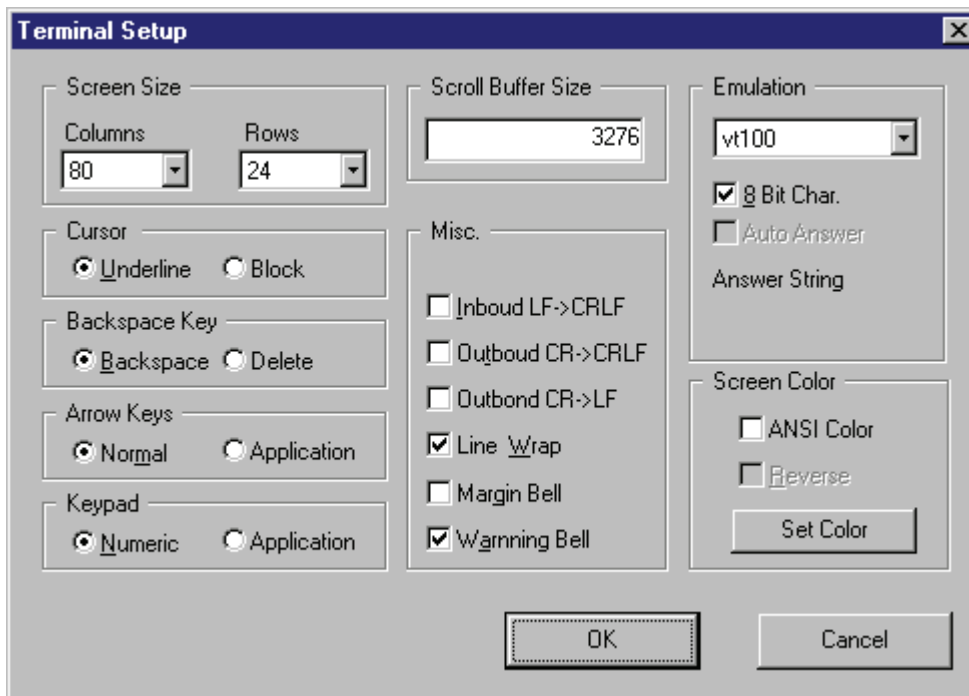
Function Key	Value
F1	
F2	
F3	
F4	
F5	^[OM
F6	^[[17~
F7	^[[18~
F8	^[[19~
F9	^[[20~
F10	^[[21~
F11	^[[22~
F12	^[[23~

Options selected:

- Normal
- Shift
- Control
- Control Shift

Buttons: Save, Done

Activating the Backspace: Using Options/terminal - make sure the Backspace key is selected:



The 'Terminal Setup' dialog box is shown with the following configuration:

Screen Size: Columns 80, Rows 24

Scroll Buffer Size: 3276

Emulation: vt100

Cursor: Underline, Block

Backspace Key: Backspace, Delete

Arrow Keys: Normal, Application

Keypad: Numeric, Application

Misc.:

- Inboud LF->CRLF
- Outboud CR->CRLF
- Outbond CR->LF
- Line Wrap
- Margin Bell
- Warning Bell

Emulation options:

- 8 Bit Char.
- Auto Answer
- Answer String

Screen Color:

- ANSI Color
- Reverse
- Set Color

Buttons: OK, Cancel

